

Making Use of APTonCD

(copy your APT cache)

Presented by Dave Mawdsley,
DACS Member, Linux SIG
May 16, 2012



Installing and Running APTonCD

Using the command line, issue the following command:

```
sudo apt-get install aptoncd
```

Your APTonCD is now ready to start.

Then issue the command:

```
aptoncd
```

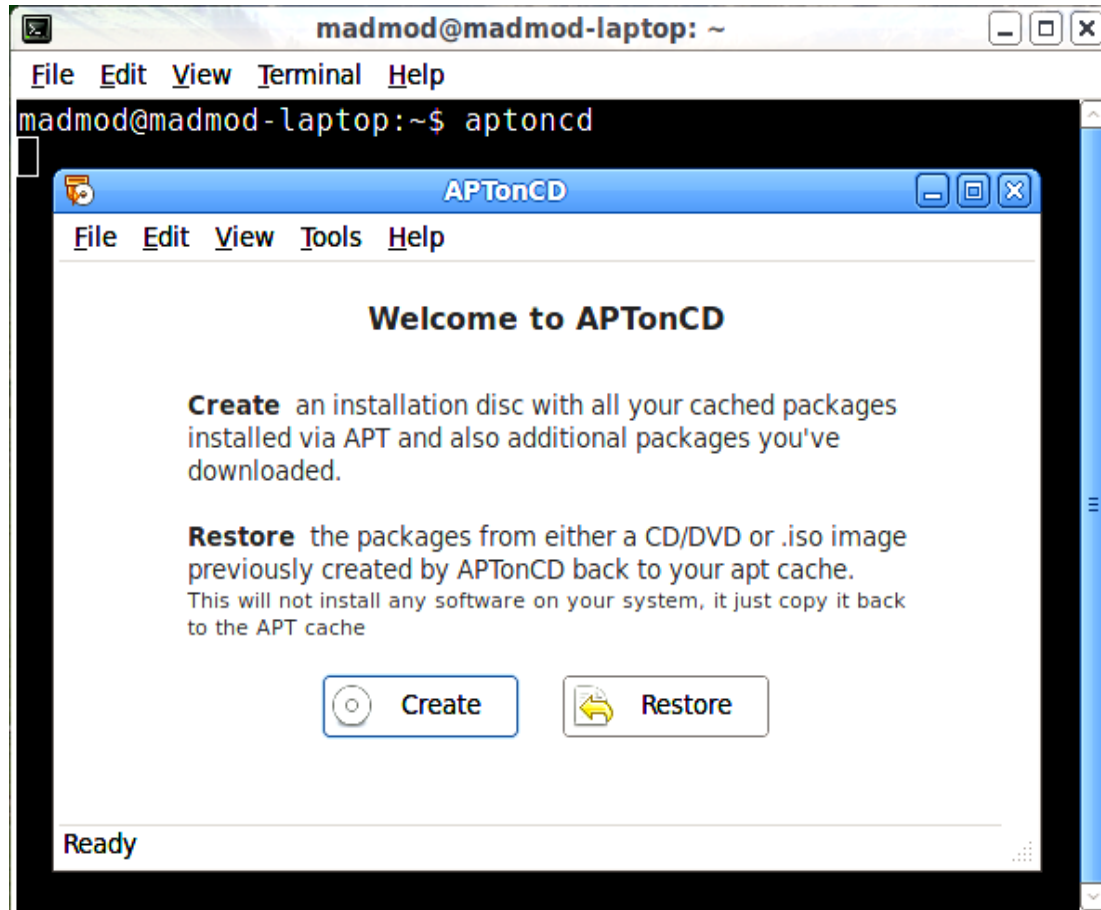
which will open a GUI and launch the application.

General Usage Notes

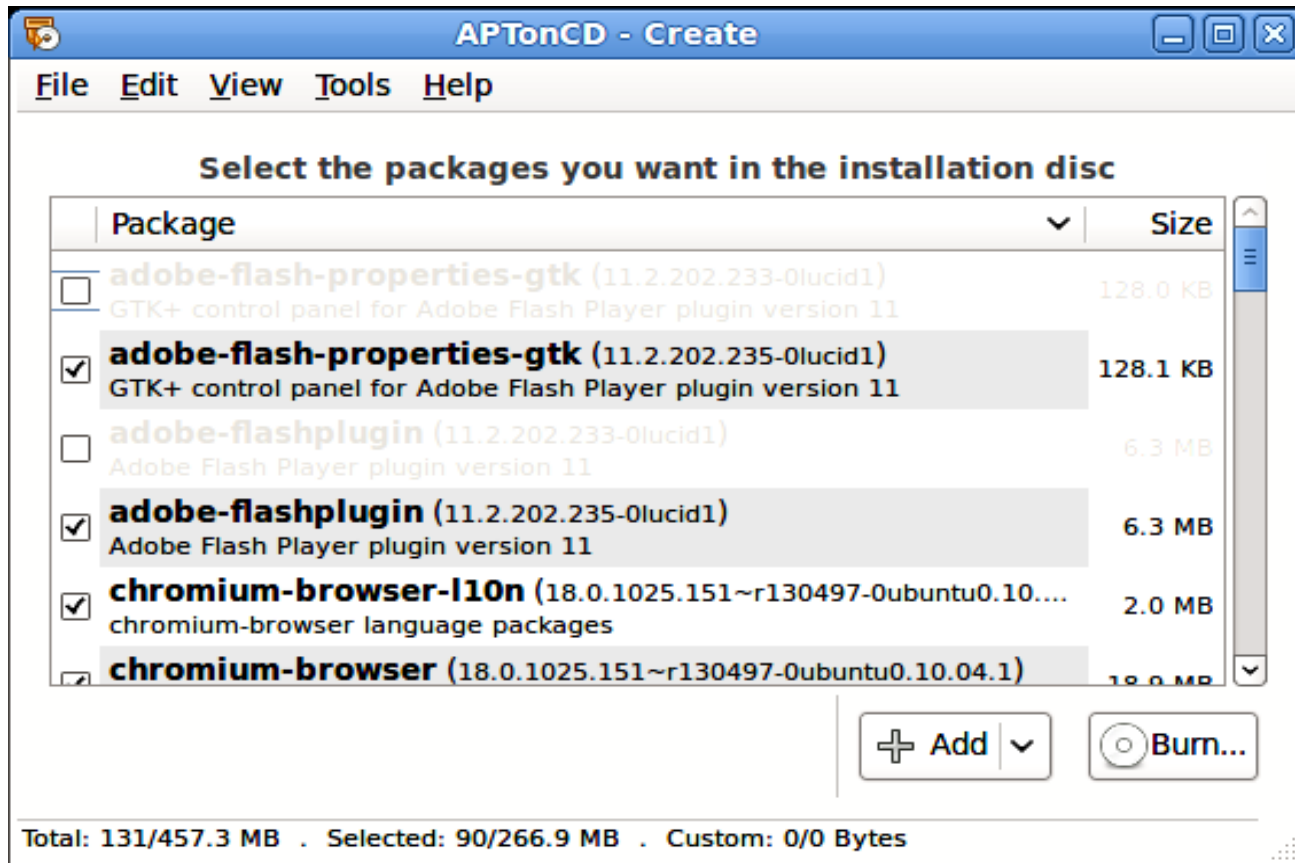
Options on the start pane include **Create** (include the items of the listing you want and burn a CD-R) and **Restore** (include the CD's items in the APT cache of the computer being used).

Once the CD-R has been made, install and run **aptoncd** on the second computer, insert the CD-R that has been burned and use the **Restore** feature.

The Main Pane of aptoncd

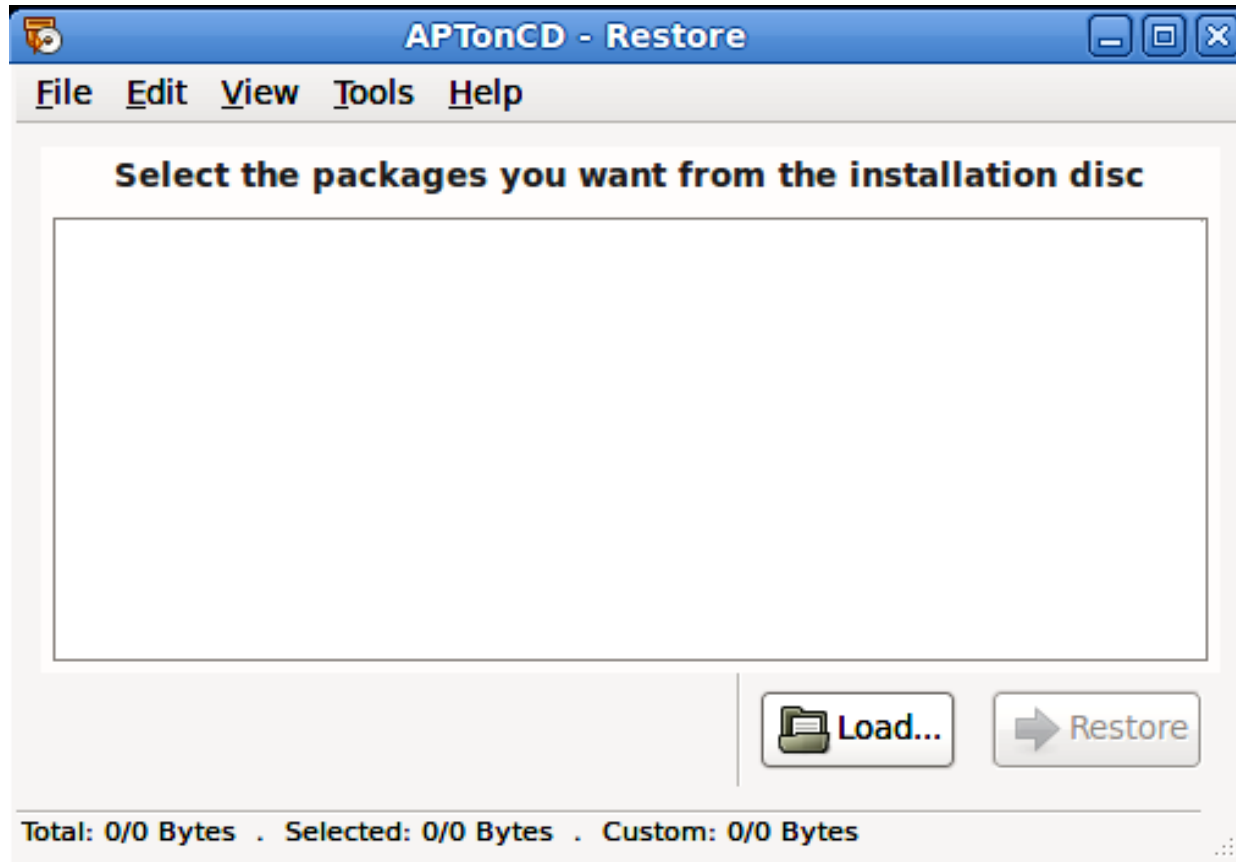


The Create Pane



The Restore Pane

(I didn't insert the CD-R before doing this.)



Final Comments

Once the contents of the CD-R have been put onto the second computer, the packages still have to be installed.

I suspect that issuing the command

`sudo apt-get update`

may be all that's needed.

It is not clear how matched the OS's of the two computers must be. In all probability, the Linux kernels should be of the same series. Installed programs of course have dependency issues with multiple variations on how they might collide.

Making Use of APTonCD

(copy your APT cache)

This LibreOffice.org Presentation 'aptoncd.odp' can
be downloaded from

<http://madmod.com/freebies.html>

